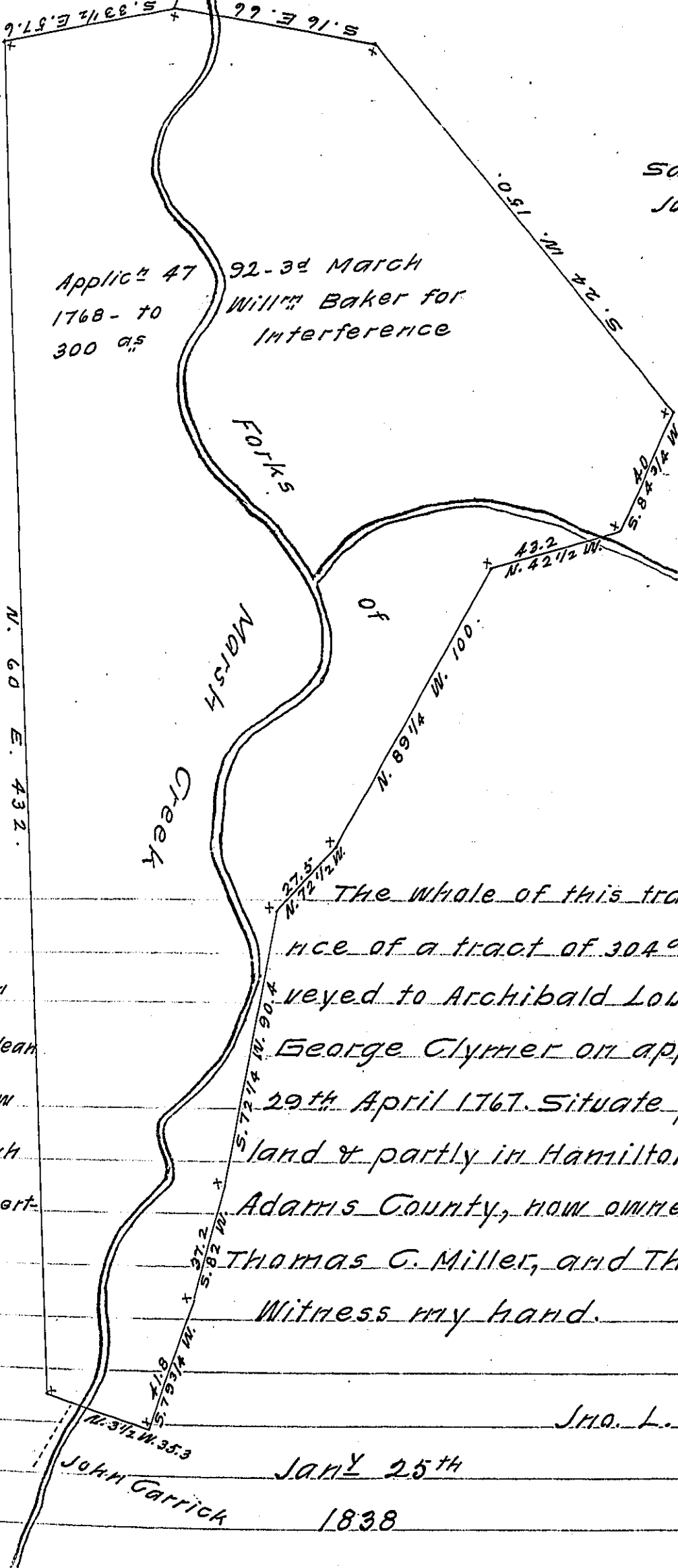


FORM No. 1.

Wm. Witherow



Saml Porter, now John Bumgardner

Wm McClean now Hugh Gilbertson

The whole of this tract is an interference of a tract of 304 a.s. 40 p.s. & allce surveyed to Archibald Loughrey in right of George Clymer on app# No 3556 dated 29th April 1767. Situate partly in Cumberland & partly in Hamiltonbann townships Adams County, now owned by General Thomas C. Miller, and Thomas Craig Reed.

Witness my hand.

Geo. L. Subernator

Jan^y 25th

John Garrick

1838

IN TESTIMONY that the above is a copy of the original remaining on file in the Department of Internal Affairs of Pennsylvania, made conformably to an Act of Assembly approved the 16th day of February, 1833, I have hereunto set my Hand and caused the Seal of said Department to be affixed at Harrisburg, this tenth day of February 1909

Henry Howard
Secretary of Internal Affairs.